

If you'd like everything to be within your reach, a flat makes a suitable choice. All the rooms are located in one floor, and the simple layout lends itself well to a relaxed and intimate look and setting.

ONE BEDROOM UNIT

42 sq.m. (451.92 sq.ft.)



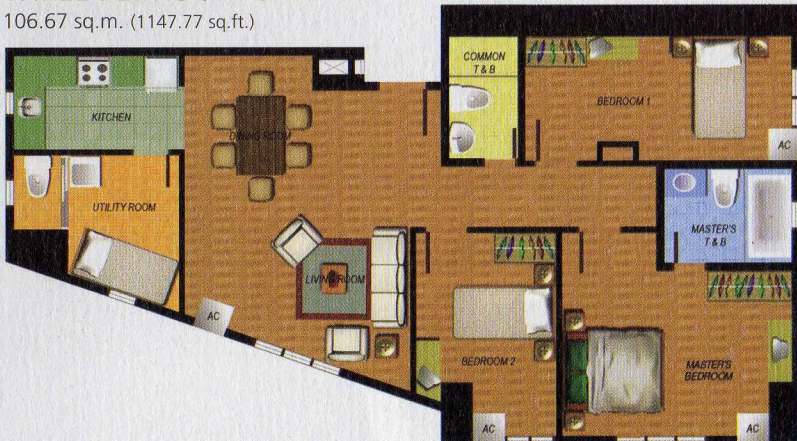
TWO BEDROOM UNIT

67.2 - 68.96 sq.m. (723.07 - 742 sq.ft.)



THREE BEDROOM UNIT

106.67 sq.m. (1147.77 sq.ft.)



DISCLAIMER: This is an architect's rendering of the featured unit. All furniture, appliances and accessories shown herein are for illustrative purposes only and are not part of the developer's standard deliverables.

Should you prefer a more unconventional use of space, a loft might be more to your taste. The high ceiling lets the light in and opens up the room, creating a stylish backdrop for cosmopolitan living.

ONE BEDROOM UNIT

41.90 - 46.15 sq.m. (464.62 - 514.54 sq.ft.)



TWO BEDROOM UNIT

67.72 - 78.04 sq.m. (728.67 - 839.70 sq.ft.)



THREE BEDROOM UNIT

114.97 - 153.07 sq.m. (1237.07 - 1646.08 sq.ft.)

